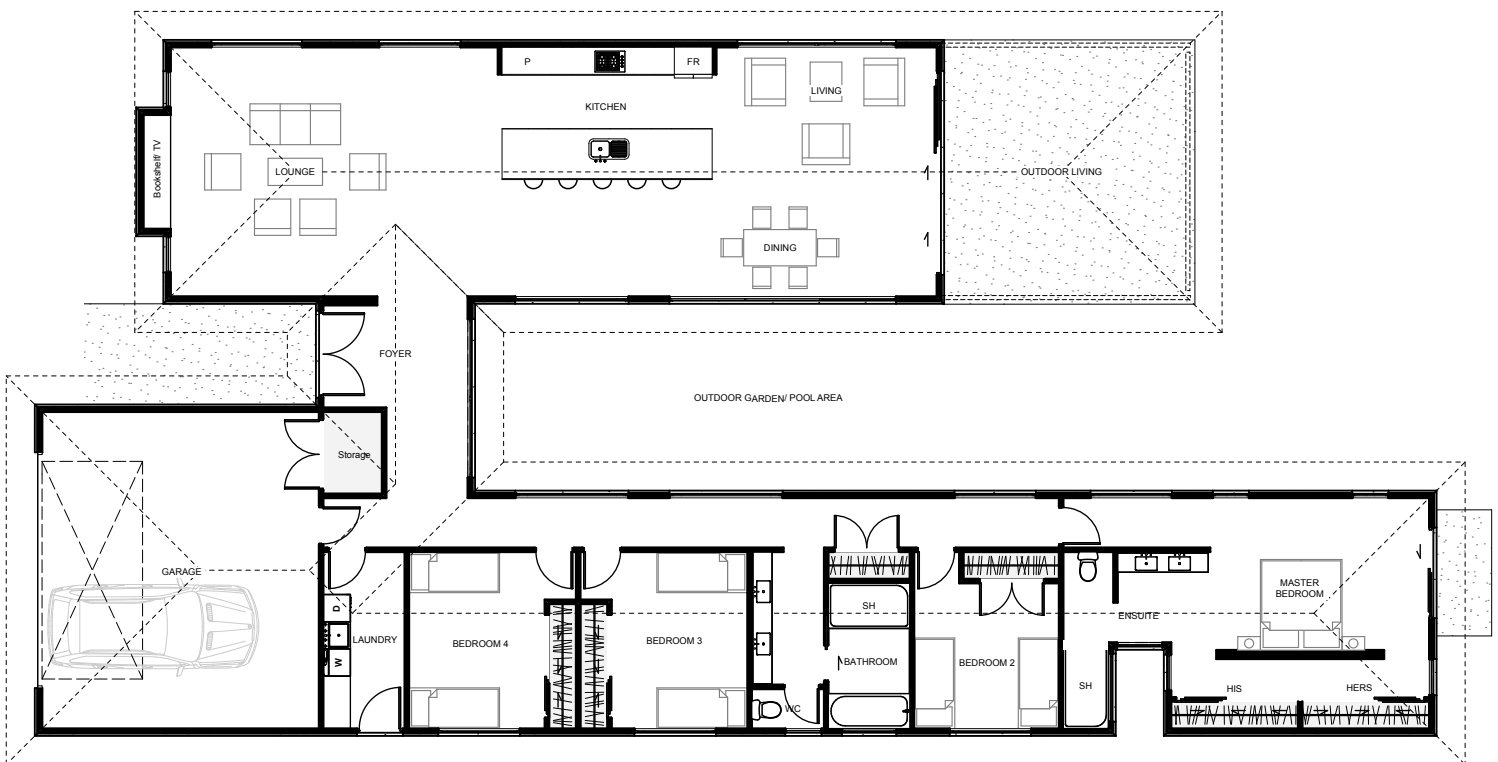









The 'Montana' is a cleverly designed 4 bedroom 'H' shaped home which separates living from bedrooms into two distinctive wings. An opening between the two wings gives plenty of space to create either a natural garden outlook or a lap pool configuration. The master bedroom is generous in size and flows nicely from the bed, through a reverse wardrobe layout to an open designed ensuite. The main living, large in size, flows seamlessly between living, kitchen, dining & outdoor living, which has great roof cover for enjoyable entertainment no matter what the weather.



Floor Area: 240m²

 2
  4
  2
  30.8m
  15.0m

Contact Mike Childs:

Ph: 06 765 8322 M: 027 444 9733

E: info@mikechilds.co.nz

www.mikechilds.co.nz

