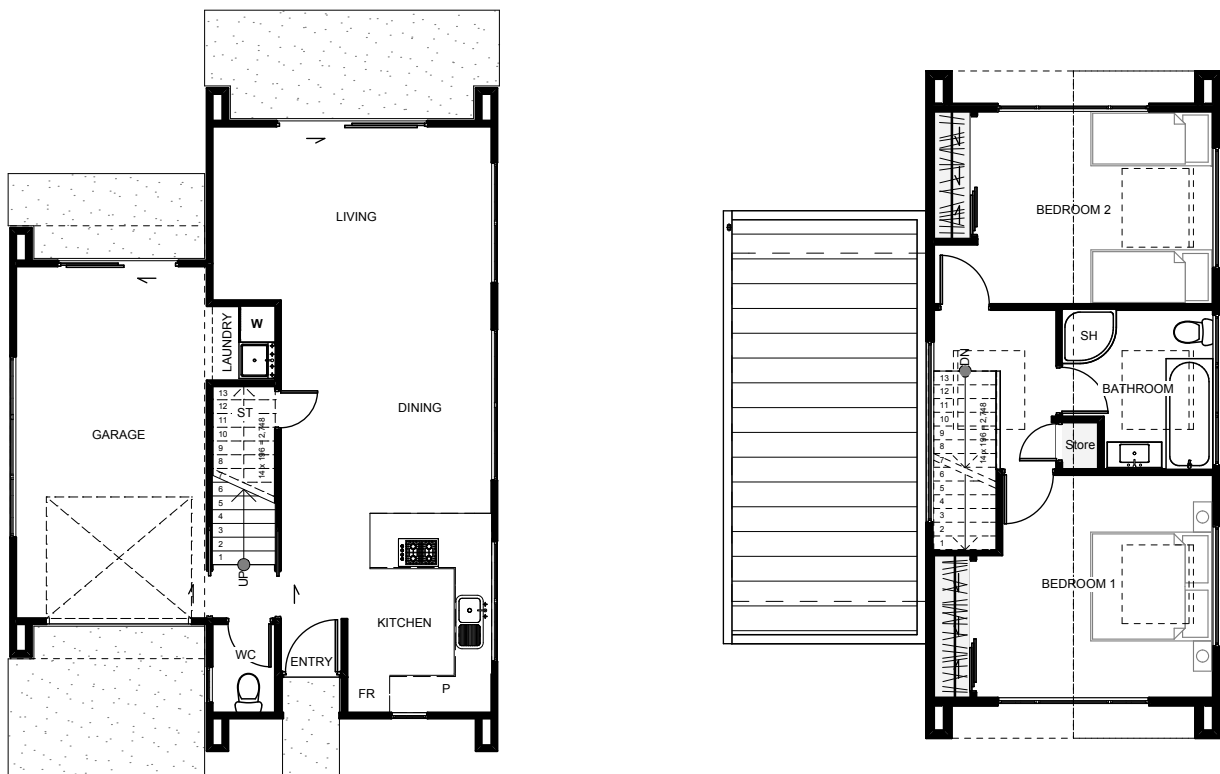





The 'Frenso' is a fantastic two bedroom townhouse with a very small footprint allowing this to fit on nearly any section, no matter what size. Open plan living downstairs stretch the length of the home opening out onto the outdoor living area. A toilet can be located on both stories, storage under the stairs and the laundry inset within the garage. Upstairs, each bedroom is positioned at either end with a central bathroom allowing some separation & privacy between.



Floor Area: 132m²

 1
  2
  1
  8.1m
  11.0m

Contact Mike Childs:

Ph: 06 765 8322 M: 027 444 9733

E: info@mikechilds.co.nz

www.mikechilds.co.nz

